

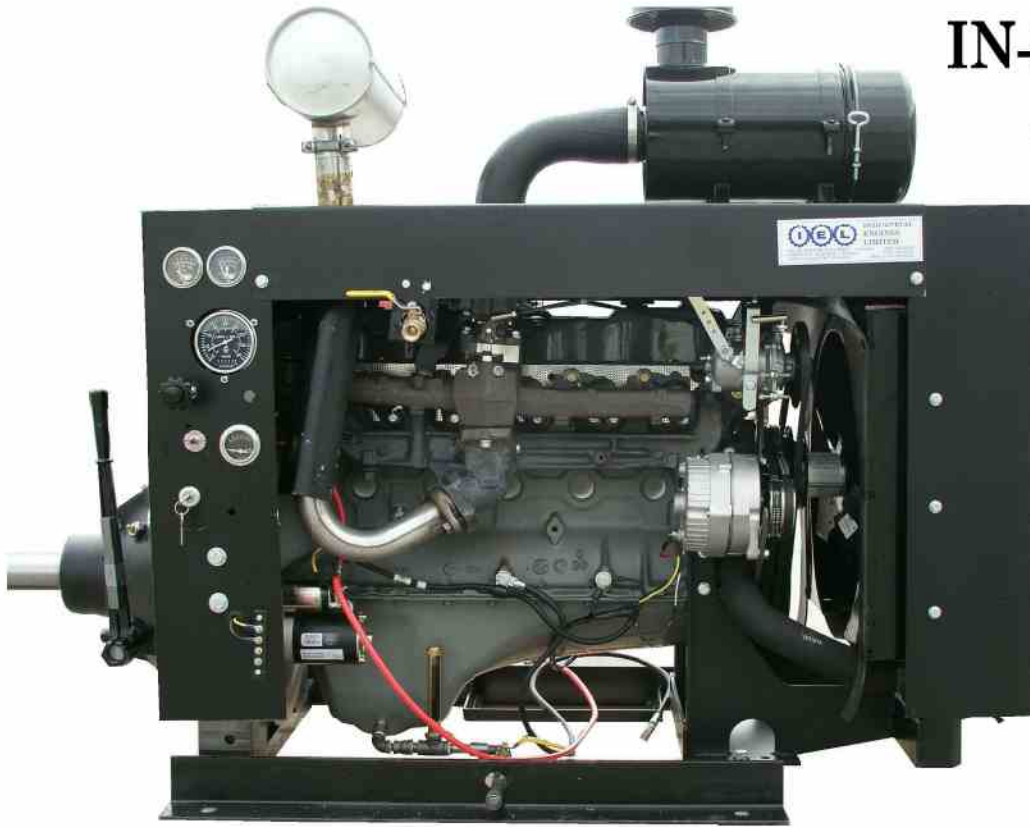


INDUSTRIAL ENGINES LTD

IEL-300

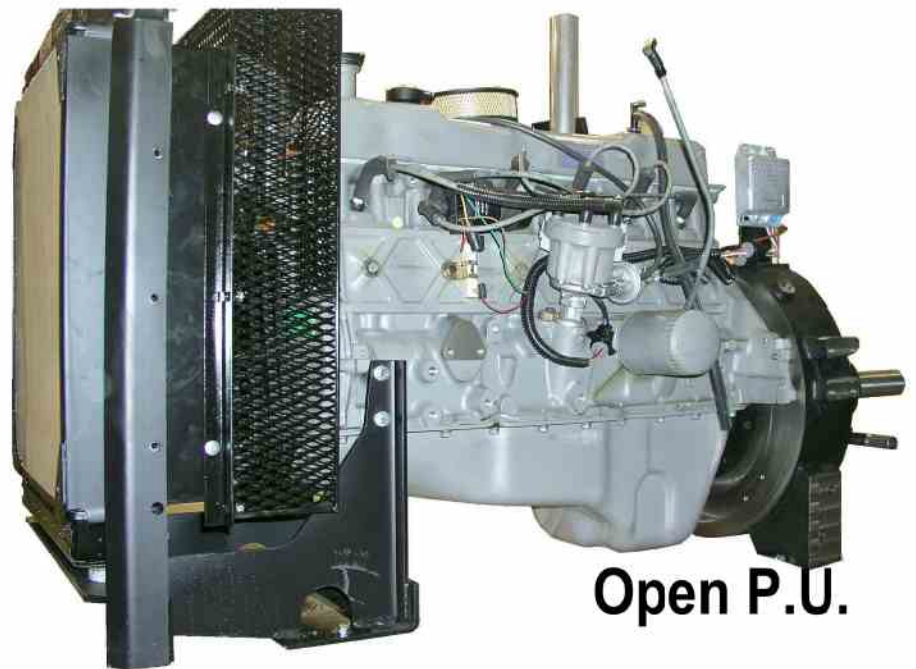
IN-LINE 6 CYLINDER

4.9 L. - 300 C.I.D.



Enclosed Power Unit

(some options shown
are not standard)



Open P.U.

OTHER STANDARD FEATURES

- Stellite valves and seats
- Heavy duty shock mounted radiator
- 37 Amp alternator
- Heavy duty Donaldson air cleaner
- Safety gauges (side or rear mounted)
- Heavy duty starter
- SAE 3 Housing, 11.5 inch flywheel
- Heavy duty mechanical governor - OR -
- Electronic governor optional
- Murphy gauges
- Electronic ignition system
- H.D. Over Center Clutch, P.T.O.

SPECIFICATIONS:

Displacement: 4.9 Liters (300 C.I.D.)

Compression Ratio 8.0:1

Bore 101.6 mm (4.00 in.)

Stroke 101.1 mm (3.98 in.)

Oil Capacity 6.6 Liters (7 quarts.)

Net Weight Engine 215 kg (473 lbs.)

Net Weight Power Unit: 417 kg (920 lbs)

POWER & TORQUE:

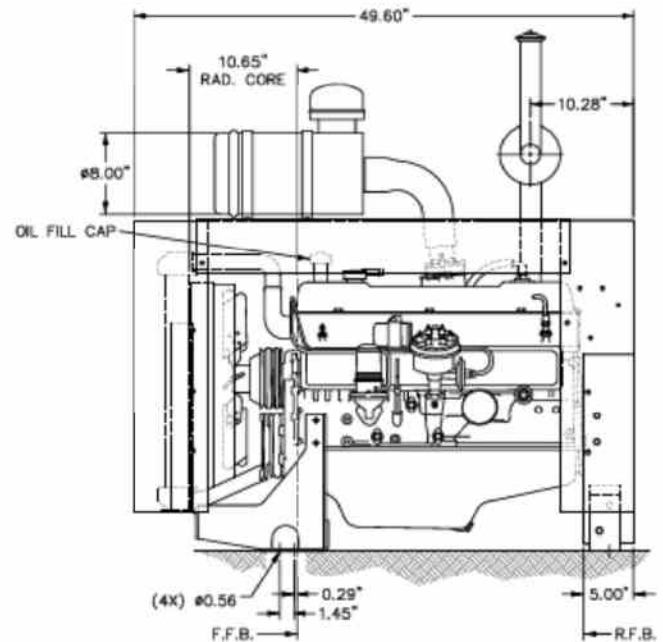
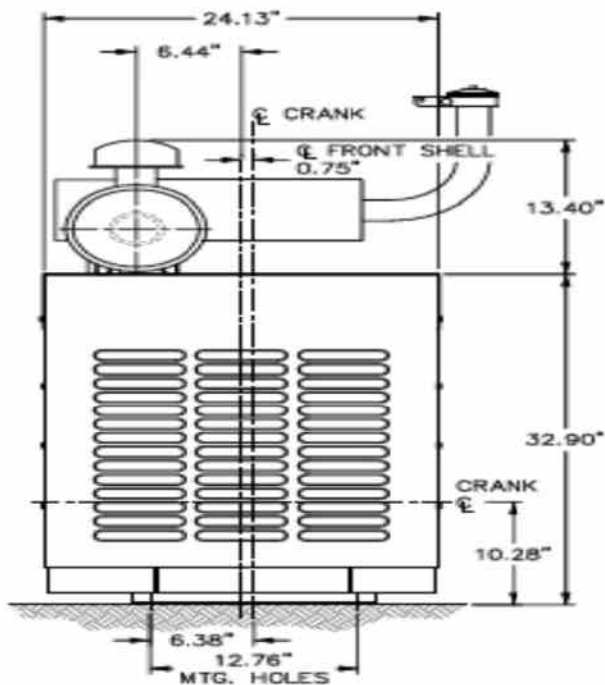
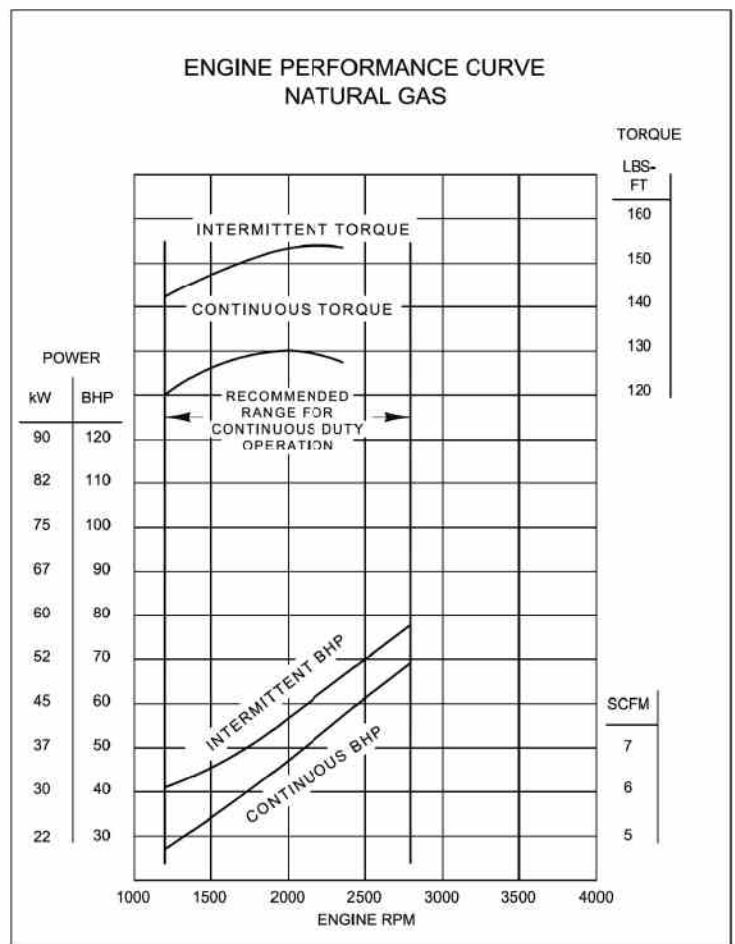
Fuel Specification 1050 BTU/SCF

Gross Power 55 kW (75 HP) @ 2800 rpm

Cont. Power 46 kW (63 HP) @ 2800 rpm

Gross Torque 150 lb. ft. @ 2000 rpm

Continuous Torque 130 lb. ft. @ 2000 rpm



14355 - 120 ave.

Edmonton, Alberta T5L2R8

Tel: (780) 484-6213

Fax: (780) 732-0400

Toll Free: (888) 887-0008

#121, 788 Caldew Street

Annacis Island

Delta, B.C. V3M 5S2

Tel: (604) 525-8529 Fax: (604) 525-0974

Toll Free: (877) 438-6560

B.C. Parts Direct: (604) 525-9153

www.industrialengines.ca

SPECIFICATIONS:

Displacement:	4.9 Liters (300 C.I.D.)
Compression Ratio	8.0:1
Bore	101.6 mm (4.00 in.)
Stroke	101.1 mm (3.98 in.)
Oil Capacity	6.6 Liters (7 quarts.)
Net Weight Engine	215 kg (473 lbs.)
Net Weight Power Unit:	417 kg (920 lbs)

POWER & TORQUE:

Fuel Specification	1050 BTU/SCF
Gross Power	55 kW (75 HP) @ 2800 rpm
Cont. Power	46 kW (63 HP) @ 2800 rpm
Gross Torque	150 lb. ft. @ 2000 rpm
Continuous Torque	130 lb. ft. @ 2000 rpm

OTHER STANDARD FEATURES:

- Heavy duty shock mounted radiator
- 37 Amp alternator
- Heavy duty Donaldson air cleaner
- Safety gauges (side or rear mounted)
- Low mount Fan
- Heavy duty permanent magnet starter
- Heavy duty mechanical governor
- Electronic Governor optional
- Radiator and fan shroud
- Radiator shell, mar panel and hood top
- Controls and instruments
- No maintenance ignition system

All specifications are subject to change without notice

ENGINE PERFORMANCE CURVE NATURAL GAS

