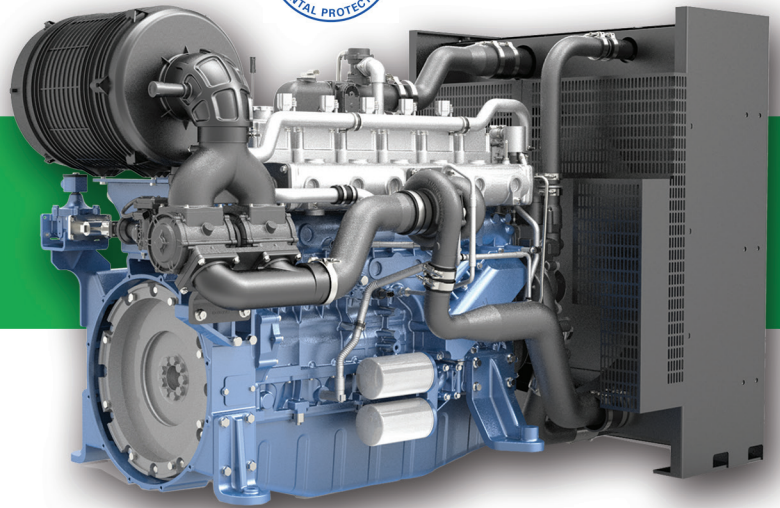


# WEICHAI



## 12.5L TA IRRIGATION

321 HP @ 1800 rpm – NG



### FEATURES

#### Engine & Block

- Cast Iron Block
- One-piece forged crankshaft
- Separate cast iron cylinder heads and replaceable dry cylinder liners
- Forged Connecting Rod

#### Cooling System

- Radiator and hoses supplied separately
- Thermostatically-controlled system with belt driven
- Water pump and Pusher/Puller fan

#### Lubrication System

- Flat bottom high capacity oil pan (36 L)
- Spin-on full-flow oil filter
- Maintenance free breather system

#### Engine Control System

- Proven ECM, Fuel System and Engine Control
- Engine Protection
- CANBUS J1939 Standard Interface
- Telematics Compatibility

#### Air Intake & Exhaust System

- Rear Mounted, Replaceable Dry Air Cleaner
- Air Cleaner Restriction Indicator

#### Electrical System

- 24V electric starter motors
- Optional low voltage battery charging alternator

#### Flywheel & Housing

- SAE 1/SAE 3 flywheel housing and 11.5/14" flywheel

#### Weichai America Corp.

3100 Golf Road  
Rolling Meadows, IL 60008  
Phone: 1-847-725-0300  
[www.weichaiamerica.com](http://www.weichaiamerica.com)

### 12.5-LITER ENGINE DATA

Model Number	WP13GTA
Bore & Stroke	5.0 in x 6.5 in (127 mm x 165 mm)
Displacement	765 cid (12,540 cc)
Cylinders	6
Compression ratio	9.7:1
Governor Method	ECM
Fuel Type	Natural Gas / Propane
Aspiration	TA
Emission Standard	EPA Certified
Dry Weight	2,337 lb (1,060 kg)

### POWER RATINGS (PRIME)

	NATURAL GAS		PROPANE	
	kW	HP	kW	HP
1800 RPM	240	321	130	174

